



# Physician Assistants: Transforming Healthcare

# Scope of Practice



- Take patient histories
- Perform physical exams
- Diagnose & treat illness
- Write prescriptions

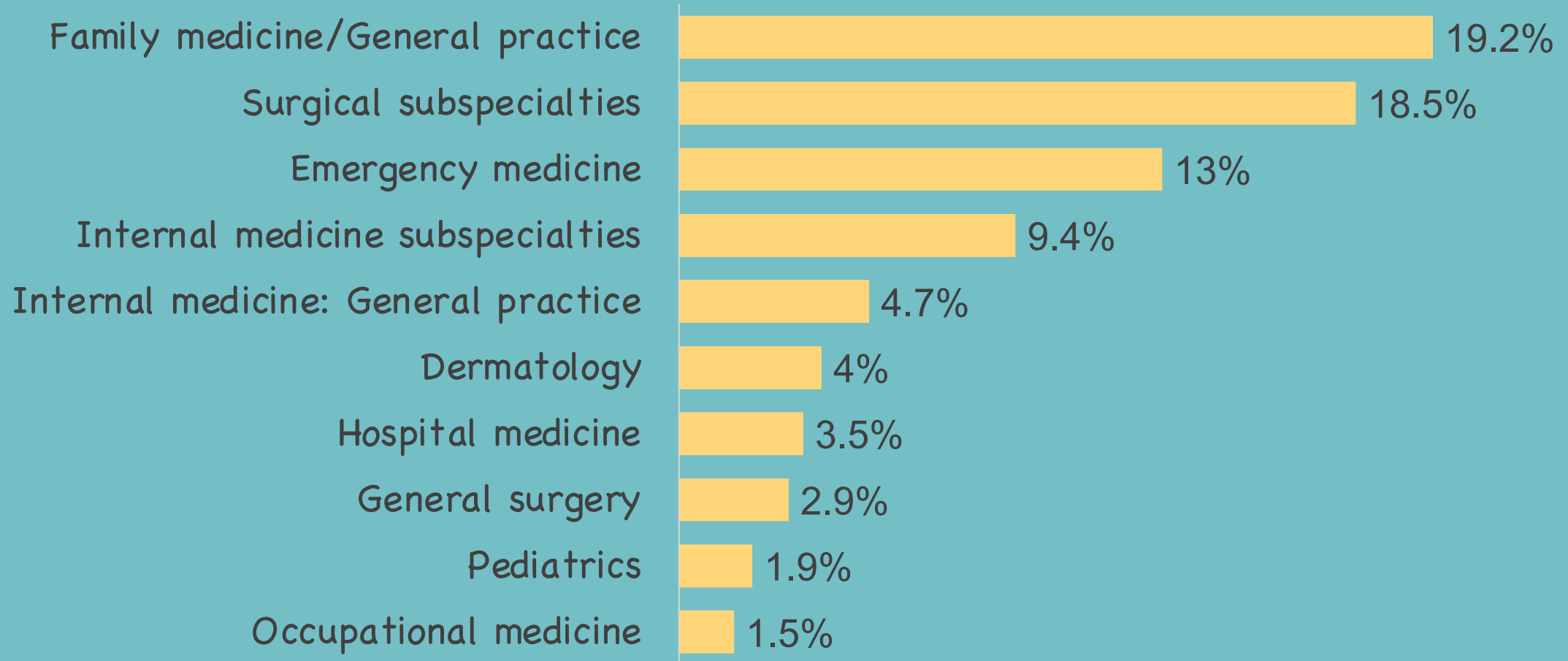


- Order & interpret lab/radiology tests
- Perform procedures

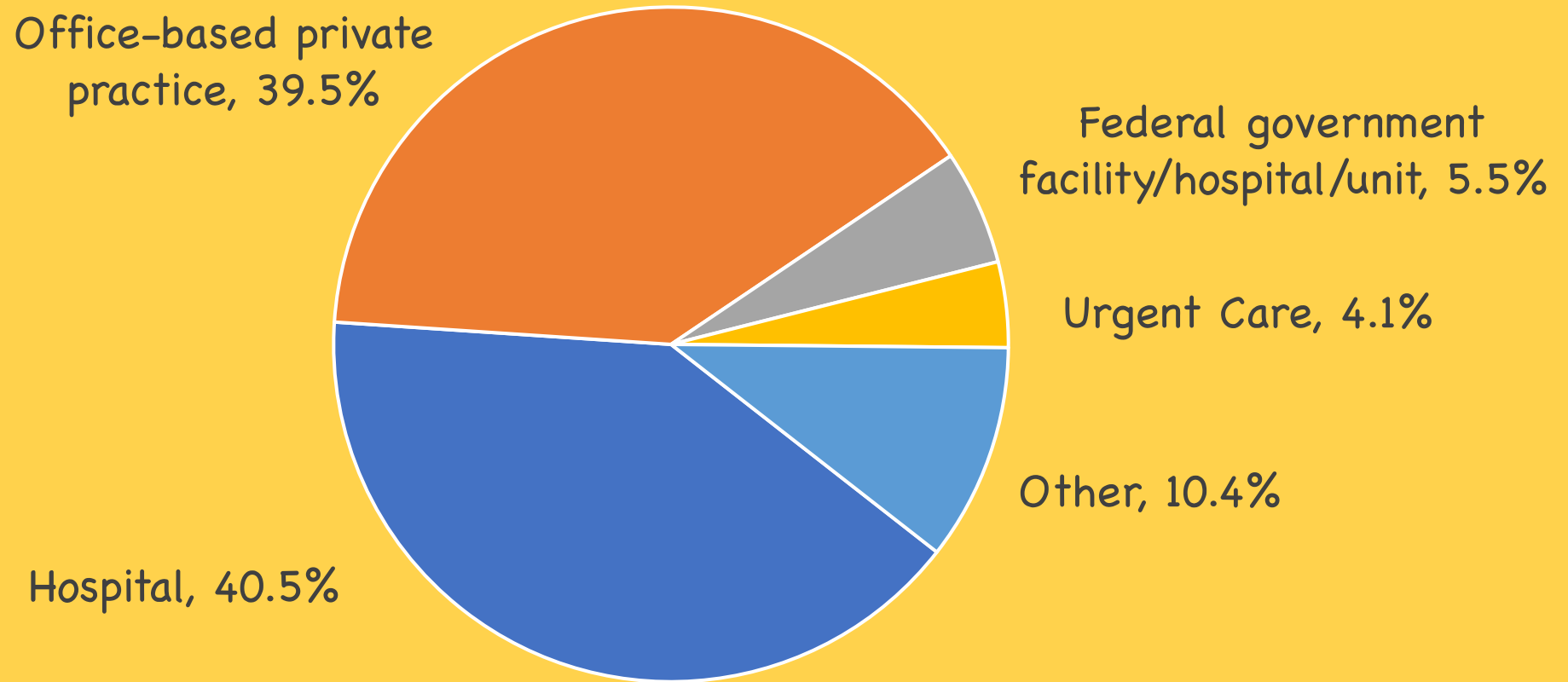


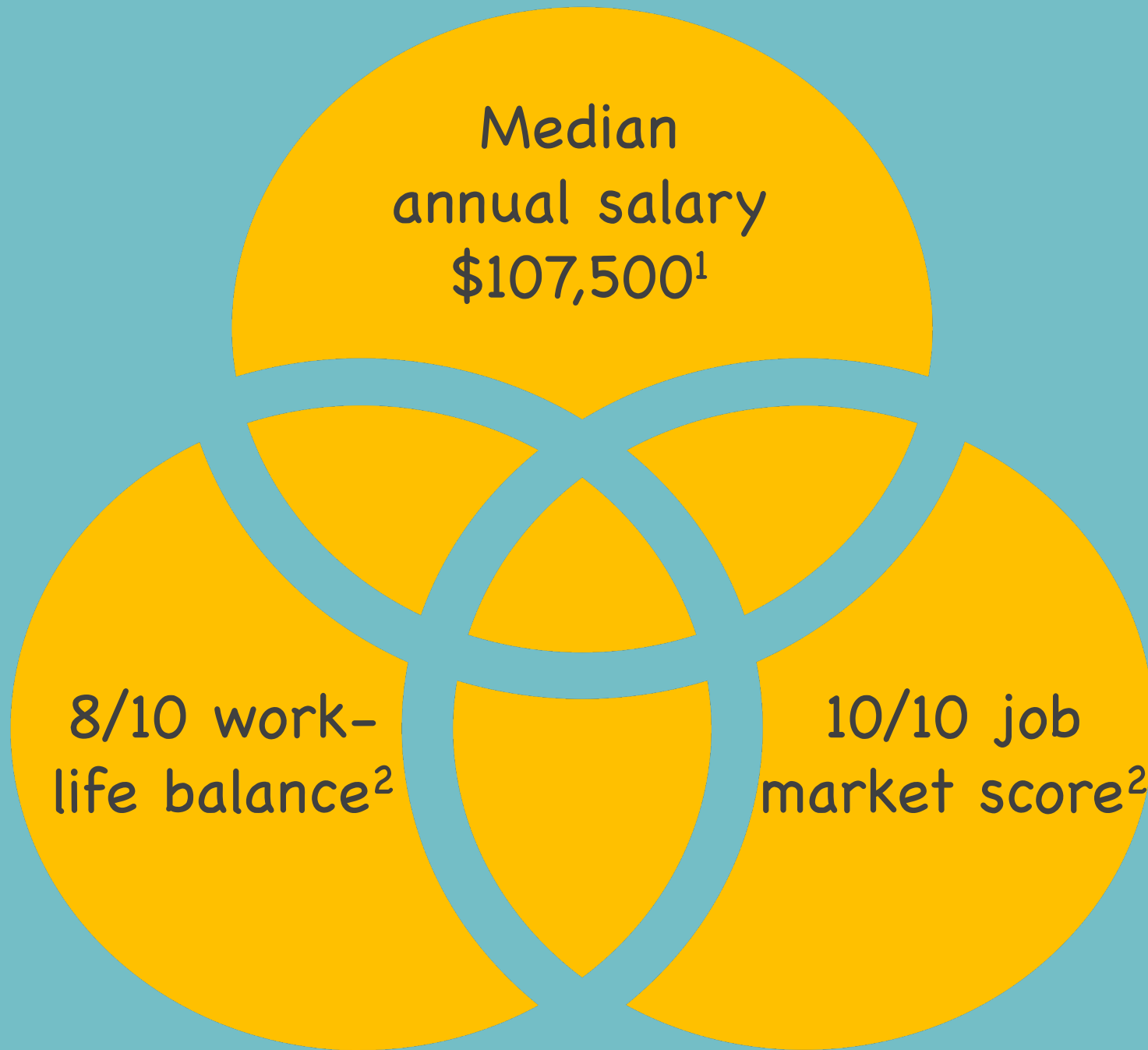
- Assist in surgery
- Counsel patients on preventive health

# Specialty-Specific Practice



# Work Environments





<sup>1</sup>2019 AAPA salary report

<sup>2</sup>U.S News & worlds report

# History of PA Profession

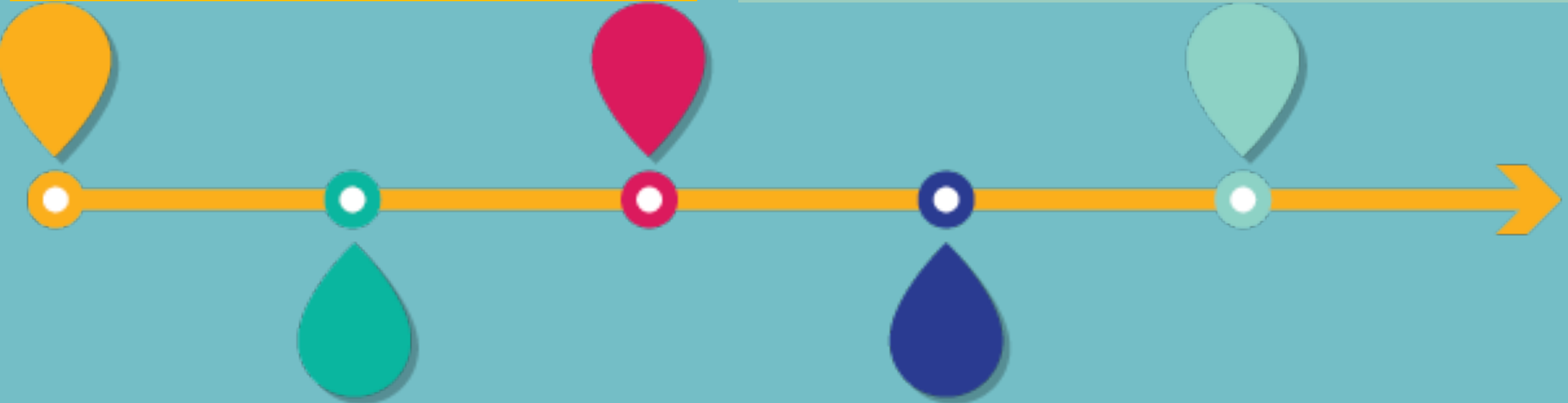
1970 - First female PA, also first Black PA

18<sup>th</sup> century - Descendants of profession

2003-present - Expansion of PA scope of Practice

1965 - First PA program (Duke University)

1978-82 - PAs appointed commissioned officers in Military



# Future of PA Profession

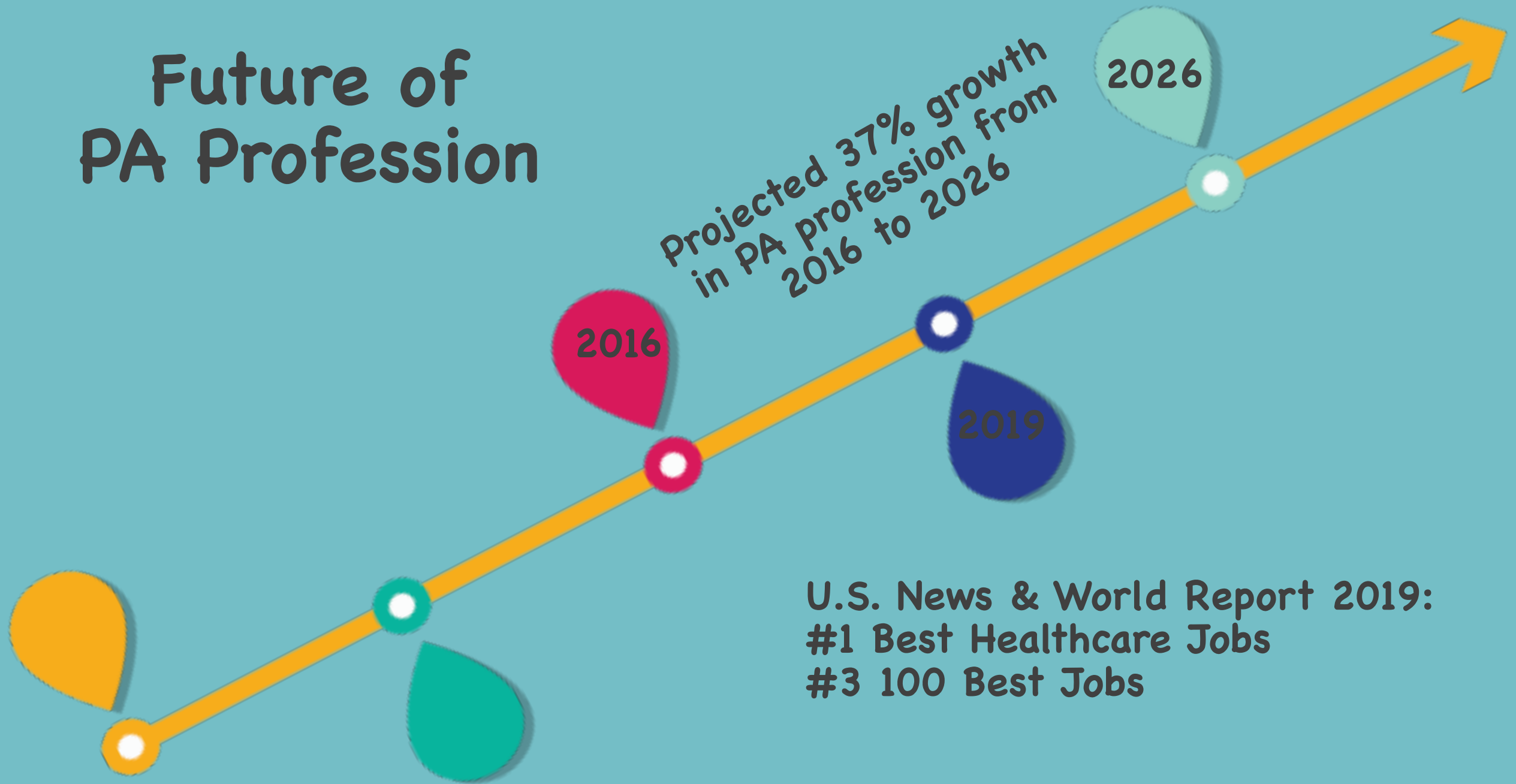
Projected 37% growth  
in PA profession from  
2016 to 2026

2016

2019

2026

U.S. News & World Report 2019:  
#1 Best Healthcare Jobs  
#3 100 Best Jobs



# Creating Diversity in Healthcare

## National PA diversity

Number of Certified PAs by Race

Race	Number	Percent
White	100,564	86.7
Black/African American	4,136	3.6
Asian	6,963	6.0
Native Hawaiian/Pacific Islander	347	0.3
American Indian or Alaskan Native	424	0.4
Other	3,515	3.0
<b>TOTAL:</b>	<b>115,949</b>	<b>100.0</b>

The chart above represents PAs who chose one race. 2,668 of respondents chose multiple races. 5,725 certified PAs who preferred not to answer the question. The percentage of PAs reporting Asian as their race has increased from 5.4% in 2016 to 6.0% in 2019. All other racial groups have remained steady for the same three-year time period.<sup>5</sup>

## PA student diversity

Number of USF PA students by Race  
Cohort

Race	2021		2022	
	Number	Percent	Number	Percent
White	19	52.8	26	72.2
Hispanic	10	27.8	12	33.3
Black/African American	2	5.6	1	2.8
Asian	9	25.0	3	8.3
American Indian	2	5.6	2	5.6
<b>Total</b>	<b>42</b>	<b>116.7</b>	<b>44</b>	<b>122.2</b>

The chart above represents PA students that may have chosen more than one race. The numbers above reflect numbers higher than the actual cohort number and percentages high than 100% for this reason



# Track to Becoming a Physician Assistant



- Earn undergraduate degree
  - Most common: biology, chemistry, nursing, exercise science, kinesiology, nutrition, psychology, genetics
- Complete PA program prerequisites
  - Most common: basic biology, anatomy, physiology, microbiology, chemistry, college math, English composition, medical terminology
- Take the GRE
- Participate in community service
- Acquire work experience
  - Most common: EMT, physical therapy aide, certified nurse aide, medical assistant, scribe, dietician, hospice, varying kinds of medical technologists

# What does PA school entail?

- 24–36month program based on didactic lectures and clinical rotations
- 
- Didactic portion
    - Structure and courses vary among program
    - Common courses: anatomy, physiology, clinical assessment based on multiple organ systems, cadaver lab, in depth studies of diseases of organ systems, pharmacology, genetics, ethics, behavioral sciences
  - Clinical portion
    - 2,000+ hours of clinical rotations in medical and surgical settings, including family medicine, internal medicine, OB/GYN, pediatrics, general surgery, emergency medicine, and psychiatry



RESPECT COMPASSION SERVICE INTEGRITY



UNIVERSITY OF  
**ST FRANCIS**

[stfrancis.edu](http://stfrancis.edu)

Questions???





## Links to look into

---

- [aapa.org](http://aapa.org)
- [yourpacan.org](http://yourpacan.org)
- [pafocus.org](http://pafocus.org)
- [directory.paeaonline.org](http://directory.paeaonline.org)